



SOMA-MEAT

*- Natural Growth Promoter
with Meat Quality Improvement Effect -*

Active Ingredients

Organic Chromium 200ppm, Organic Selenium 200ppm
Specific Amino Acid, Electrolytes, Enzymes, Yeast Culture

◆ Increase Growth Rate, Feed Efficiency

60kg ~ 106kg	Control	SOMA-MEAT	Difference
ADG (g/d)	829	875	+5.5%
FCR	3.05	2.86	-6.6%

◆ Improve Carcass Quality & maintain fresh meat color

High Grade Pork Appearance(%)

	Control	SOMA-MEAT	Difference
Grade A, B	52	89	+37% P

* Reduced backfat thickness (17.4mm → 13.9mm)

* Changed pork color fresh & pinky → Anti-Oxidation Effect

◆ Lowering Social Activity, Longer Sleeping Time & Reduced Stress

◆ Prevent Drip Loss (2.0% → 0.7%)

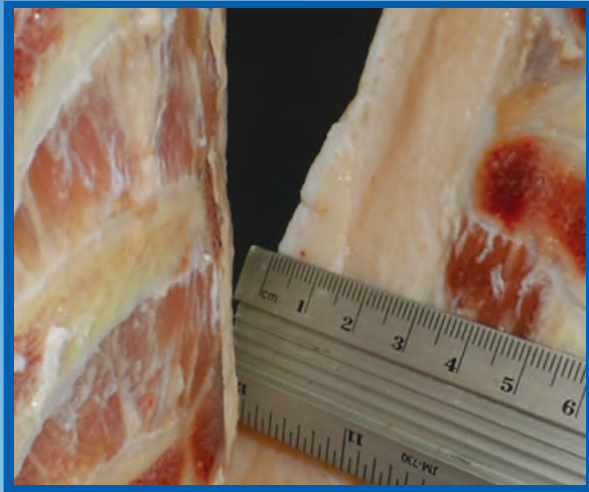
◆ Increase Lean Meat Percentage (7%)

◆ Less sudden death, muscular dystrophy, white muscle disease



Feeding Effect

◆ Direct Carcass Measurement of Backfat



(Control) Backfat thickness: 3.2cm



(SOMA-MEAT) Backfat thickness: 2.0cm

◆ Effect for growth performance in Broiler

	growth (g)	feed intake (g)	FCR	mortality (%)	breast fat (%)
Control	1258	2013 ^b	1.60	1.04 ^b	1.23 ^b
SOMA-MEAT	1271	1956^a	1.54	0.78^a	0.56^a

* Feeding period : 2 months before slaughtering (pig, cattle)

3 weeks before market weight (poultry)

* Application : Mixing with feeds or top dressing

* Inclusion rate : 0.1~ 0.3% in feeds